

Office power and data distribution solutions for today, flexibility for the future. In the ever changing and evolving business environment it is not only the work force that must be flexible, but also the work place. There is a constant need for reorganisation and relocation of staff. This means moving desks and workstations, and with it comes the need to reconfigure power and data cabling. Ackermann Spider provides a radically superior approach to fast and simple relocation of power and data services, providing maximum flexibility, and significantly reducing the cost of office churn.

- Quick and easy to install, requiring no knowledge of the final desk layout
- Maximum saturation of services without the cost of flood wiring
- Enables you to move a workstation without skilled trades people in under 10 minutes
- Offers a fast re-configuration of services with plug to plug connection
- Causes minimum disruption. No need to re-patch data networks or reconfigure telephone extensions
- Complies with all relevant safety and performance standards for both power and data
- Significantly reduces the cost of office churn

| SPIDER - ADDITIONAL PARTS | | | | | | |
|---------------------------|----------------|-----------------------|-----------|-----------------------|-----------|-----------|
| POWER - LEADS | | | | | | |
| Connector to Connector | | Cable Size & Length | | | | |
| Wiring | Connector Type | 1.5mm ² 5m | 7m | 2.5mm ² 5m | 7m | 11m |
| 3 core | 3 pole Wieland | SP5105GST | SP5107GST | SP5115GST | SP5117GST | SP5111GST |
| 4 core | 4 pole Wieland | SP6105GST | SP6107GST | SP6115GST | SP6117GST | SP6111GST |
| Connector to Tails | | Cable Size & Length | | | | |
| Wiring | Connector Type | 1.5mm ² 5m | 7m | 2.5mm ² 5m | 7m | 11m |
| 3 core | 3 pole Wieland | SP5005GST | SP5007GST | SP5015GST | SP5017GST | SP5011GST |
| 4 core | 4 pole Wieland | SP6005GST | SP6007GST | SP6015GST | SP6017GST | SP6011GST |

| DATA - PATCH LEADS | | | |
|--------------------------|-----------|-----------|------------|
| RJ45 Connector both ends | | | |
| Type | Length 5m | Length 7m | Length 11m |
| Part No. | SD5105 | SD5107 | SD5111 |
| RJ45 Connector to Tails | | | |
| Type | Length 5m | Length 7m | Length 11m |
| Part No. | SD5005 | SD5007 | SD5011 |

| OUTLETS | | |
|----------------------------------------|----------|----------|
| Hub Outlet Pack (Order 1 pack per hub) | | |
| Type | Quantity | Part No. |
| Outlet Pack | 12 | SP100512 |
| Single Outlets | | |
| Type | Quantity | Part No. |
| Service Outlet | 1 | SP1005 |

| UMBILICAL TUBE | | |
|----------------|----------|----------|
| Type | Quantity | Part No. |
| Umbilical Tube | 25m Reel | SP980994 |

| CABLE FEEDER (FERRET) | | |
|-----------------------|----------|----------|
| Type | Quantity | Part No. |
| Cable Feeder | | SP4002 |

Full range of data connectors are available

Ackermann offer comprehensive project support, design and technical advice. Please contact our helpline on the number below.

Ackermann



| | | |
|-----------------------------------------------------------------------------------------------|-----------------------------------|---------------------------------------|
| Novar ED&S Ltd The Arnold Centre Paycocke Road Basildon Essex SS14 3EA United Kingdom | | |
| Customer Service Tel 01268 563252 | Customer Service Fax 01268 563437 | Literature Helpline Tel 0870 240 3391 |
| Technical Helpline 01268 563434 | E-mail ackermann@novar-eds.com | Website www.ackermann.co.uk |
| Registered office: Novar House 24 Queens Road Weybridge Surrey KT13 9UX Registered No. 189291 | | Literature Ref Spider AK/03-07-03/003 |

Ackermann is a Novar business

Spider System Revealed

HUB

THE HUB CONSISTS OF GALVANISED HOUSING, POWER UNIT, AND DATA UNIT

EACH HUB FEEDS UP TO 8 SERVICED DESKS, THROUGH A POSSIBLE 12 OUTLETS

RANGE OF POWER UNITS WITH MCB OR RCBO PROTECTION.

POWER UNITS SUPPLIED PRE-FITTED TO HOUSING

WIDE RANGE OF DATA UNIT OPTIONS AVAILABLE, SUPPLIED DETACHED FROM HOUSING

Note:

The Spider system complies with all relevant safety and performance standards for both power and data, including recommended separations for power and data cabling, as stated in BS EN 50174 part 2

UMBILICALS

UP TO 12 FLEXIBLE TUBES OR UMBILICALS RADIATE OUT FROM EACH HUB AT VARYING LENGTHS, THEY CREATE UNDER FLOOR PASSAGEWAYS BETWEEN THE HUB AND OUTLETS

EACH UMBILICAL HAS CAPACITY TO GUIDE POWER AND DATA CABLING FROM THE INDIVIDUAL WORKSTATIONS BACK TO THE HUB

KEEPS INSTALLATIONS NEAT AND TIDY, PREVENTS 'BIRDS NEST' OF CABLES BENEATH FLOOR

SUPPLIED ON REEL AND CUT TO LENGTH ON SITE

PUSH FIT CONNECTION TO HUB AND OUTLET

GROMMETS

THE GROMMETS ARE CONNECTED TO ONE END OF THE UMBILICAL

PROVIDES SERVICE OPPORTUNITIES, MAXIMUM 12 PER SPIDER HUB

ENABLES POWER AND DATA CABLING FROM WORKSTATIONS TO PASS THROUGH FLOOR, INTO UMBILICAL, AND BACK TO HUB

NEATLY CLOSES OFF DORMANT UMBILICALS

SPLIT LID GROMMET IS COMPLETE WITH INTEGRAL FOAM INSERTS

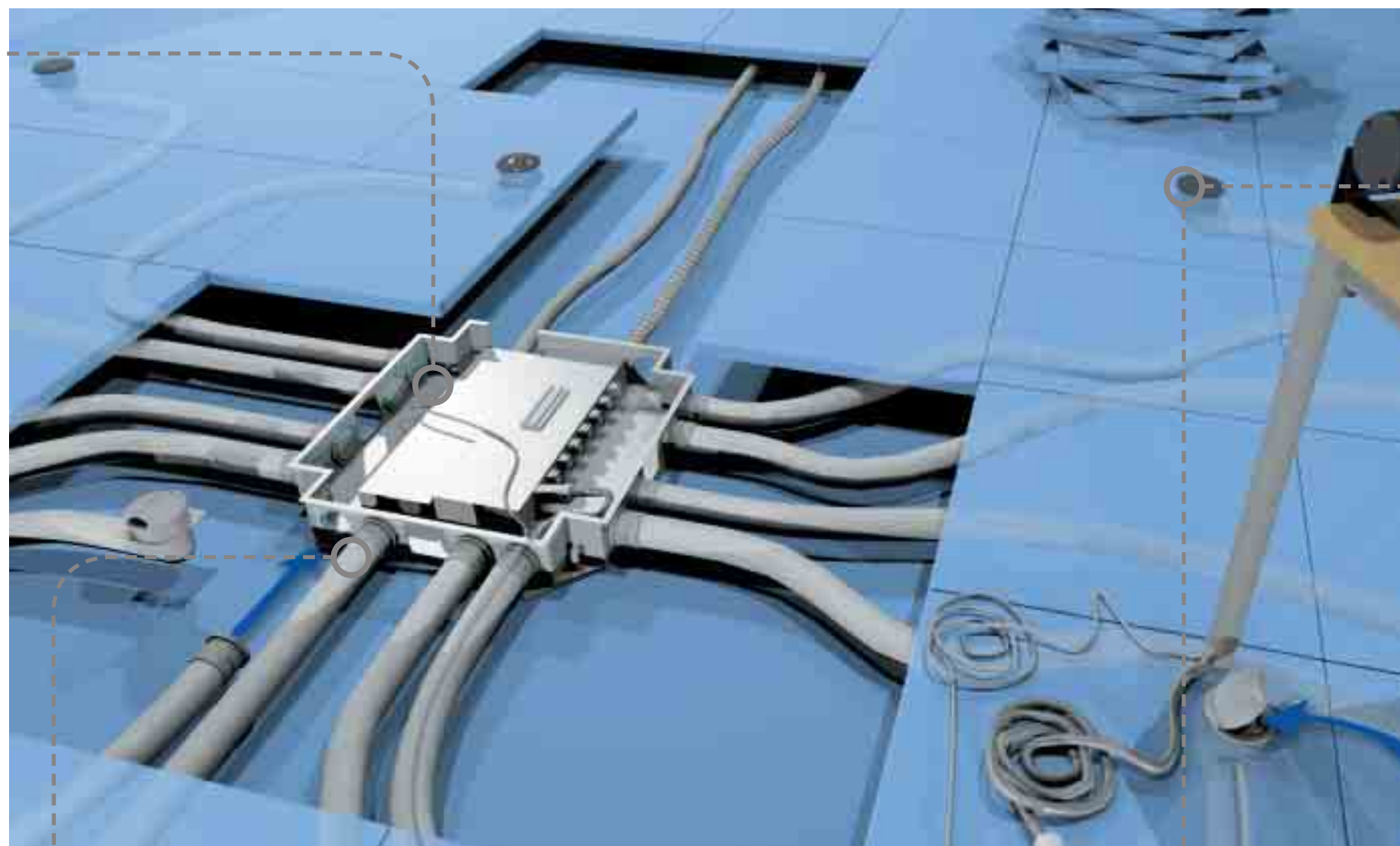
PUSH FIT AND SELF TIGHTENING BLADE FIXING OPTIONS

SECURE FITTING AND EASY REMOVAL

ANGLED SOCKET OUTLETS IN POWER GROMMETS

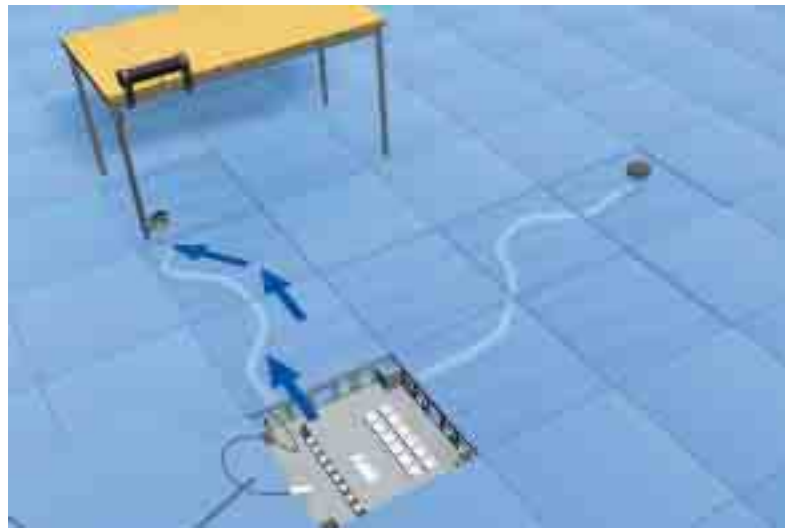
UNSERVICED LJ6/EURO DATA GROMMETS AVAILABLE

AVAILABLE IN DARK GREY AND LIGHT GREY



Spider Relocation

Spider Planning



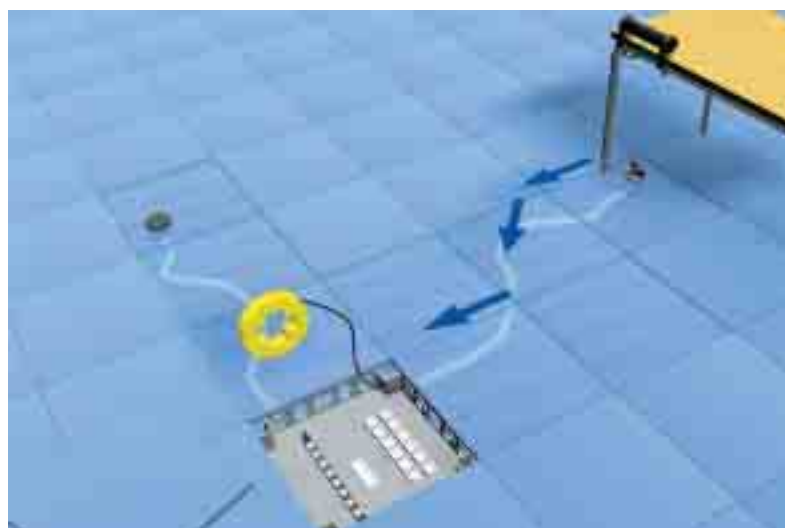
Step 1

- Lift a single floor tile to reveal the Ackermann Spider hub
- Disconnect the services from the hub and pull cables back to desk



Step 2

- Move desk to new location



Step 3

- Using the ferret and cable feeder, pull cables through from new location to the hub
- Re-connect services to their original sockets no need to re-patch data
- Replace tile over the hub
- All this in under ten minutes

Ackermann Spider - The Planning

The Ackermann Spider can be easily applied to many situations, providing significant benefits to both the planner and end user. The practicality and flexibility of the system means that it is not necessary to know the final desk layout when planning a Spider installation. Service outlets can be provided at the required density and workstations can be easily located in a variety of configurations. The planning of a spider installation is based on a grid principle. The raised access floor with its typical 600 x 600mm floor tiles forms the basis of the grid.

1 Position outlets in a grid pattern

High density applications: Every 3rd floor tile
Medium density applications: Every 4th floor tile
Low density applications: Every 5th floor tile

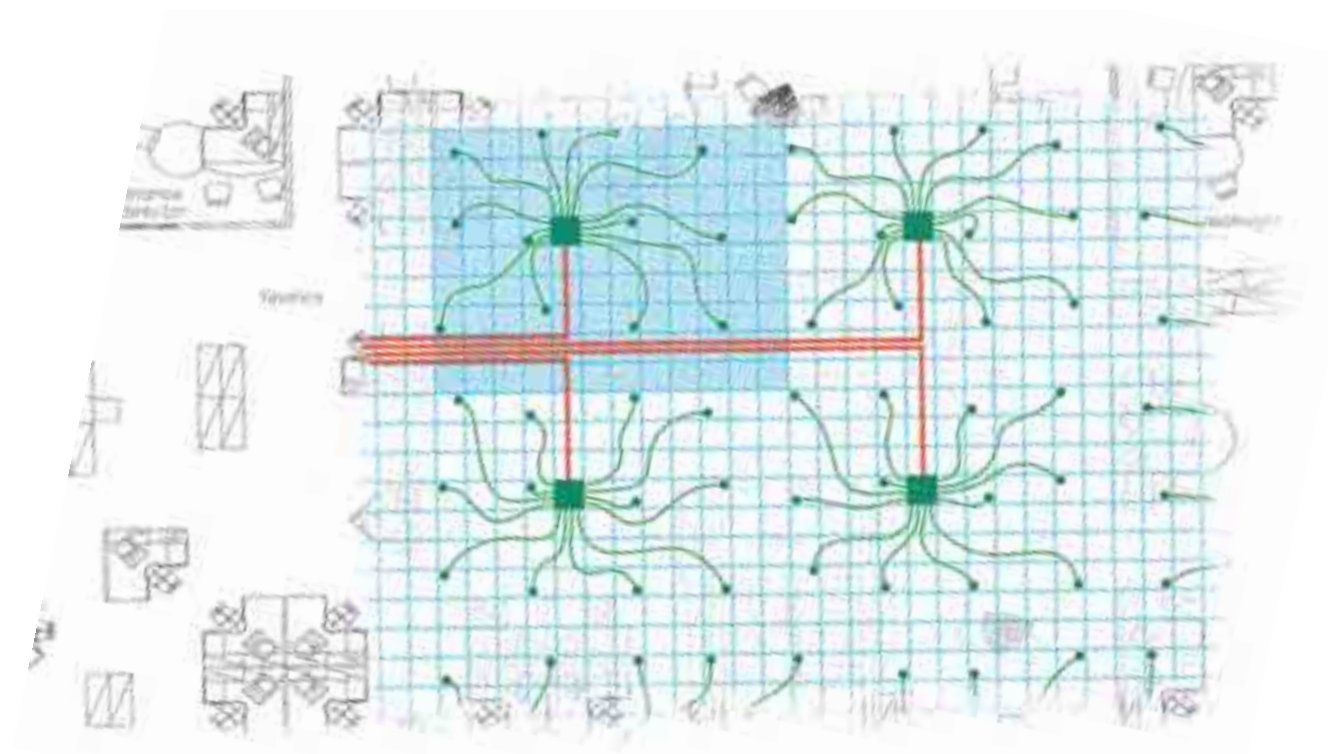
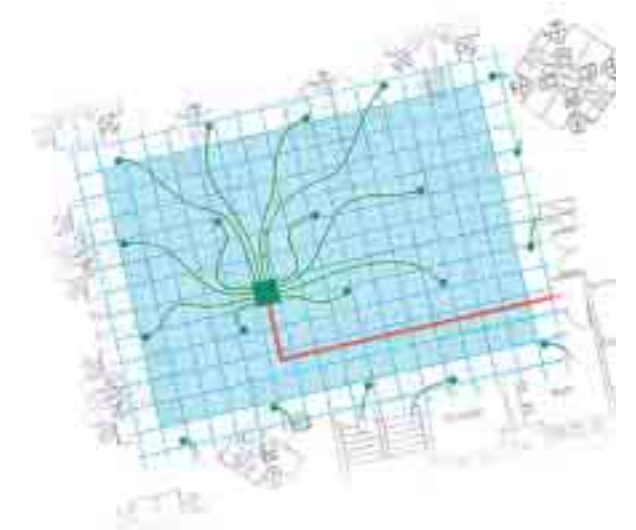
2 Centrally position the spider hub to feed 12 outlets

High density applications require 1 hub per 38m²
Medium density applications require 1 hub per 70m²
Low density applications require 1 hub per 108m²

3 Estimate quantity of umbilical reels

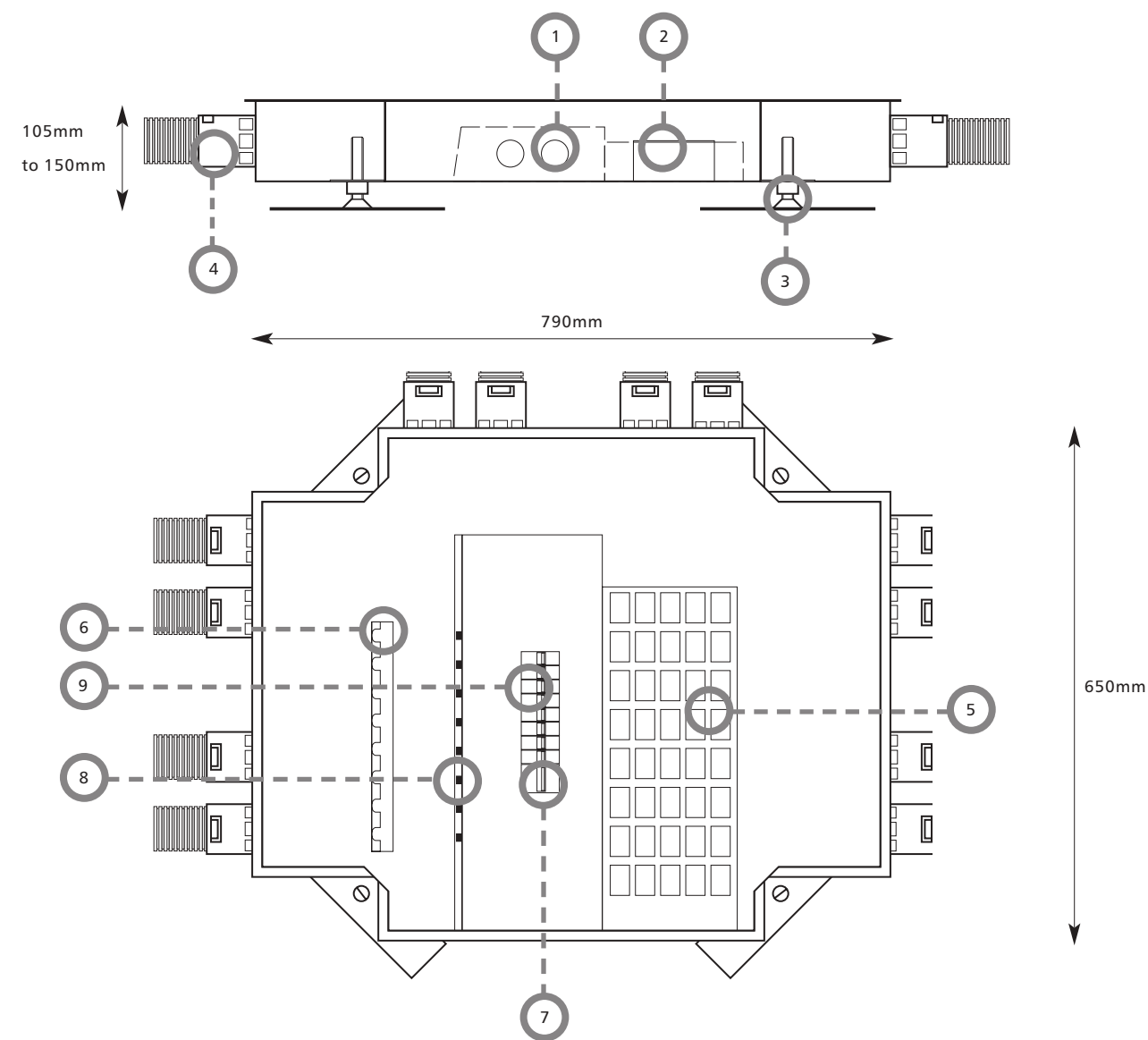
Outlet on 3 tile grid = approx 35m per hub
Outlet on 4 tile grid = approx 50m per hub
Outlet on 5 tile grid = approx 65m per hub

4 Continue grid pattern across the rest of the floor



It is important to plan the layout so that the spider hub can be easily accessed by lifting a simple floor tile, situated above each hub. Individual power supplies can be isolated without lifting the floor tile by accessing breakers through a hatchway in the floor tile.

Spider Technical



| KEY | |
|-----|------------------------------------------------------------------------------------------------------------------------------|
| 1 | Incoming power supply via 2 x 25mm diameter knockouts. Max cable connector size = 25mm² |
| 2 | Aperture (120 x 35mm) provides entry for data and voice cables |
| 3 | Mounting feet allow adjustment of up to 150mm for deep voids. |
| 4 | Up to 12 outlets accommodate 50mm diameter tubing. The tubing is supplied on a reel and is easily cut to the required length |
| 5 | Upto 40 data connectors (aperture 36.7mm x 22.2mm) |
| 6 | Conduit mounting bracket for securing power leads and earthing conduit |
| 7 | 32 Amp isolator switch available |
| 8 | Up to a maximum of 8 No. power sockets are accommodated within the hub |
| 9 | The circuit breaker is rated up to 16 amps and is accessed via a hatchway |

| POWER UNIT | | | DATA UNIT | PART NO |
|------------|----------------|--------------------------------------------|-----------------------------------|-------------|
| Power Unit | Connector Type | Protection | | |
| 8 Way Std. | 3 pole Wieland | 8 x MK 16A Type B MCB | To Accept 40 RJ45/LJ6C Connectors | SP128M |
| | | 8 x MK 16A Type B MCB + 32A Isolator | | SP128IM |
| | | 8 x MK 16A Type B 30mA RCBO | | SP128RC |
| | | 8 x MK 16A Type B 30mA RCBO + 32A Isolator | | SP128IFC |
| 8 Way 607 | 4 pole Wieland | 8 x MK 16A Type B MCB | To Accept 40 RJ45/LJ6C Connectors | SP128M607 |
| | | 8 x MK 16A Type B MCB + 32A Isolator | | SP128IM607 |
| | | 8 x MK 16A Type B 30mA RCBO | | SP128RC607 |
| | | 8 x MK 16A Type B 30mA RCBO + 32A Isolator | | SP128IFC607 |
| 8 Way CE | 4 pole Wieland | 8 x MK 16A Type B MCB | To Accept 40 RJ45/LJ6C Connectors | SP128MCE |
| | | 8 x MK 16A Type B MCB + 32A Isolator | | SP128IMCE |
| | | 8 x MK 16A Type B 30mA RCBO | | SP128RCCE |
| | | 8 x MK 16A Type B 30mA RCBO + 32A Isolator | | SP128IFCCE |

Full range of data accessories available from MK Electric

GENERAL

- Minimum floor void 105mm
- Jacking legs are supplied to accommodate floor depths up to 150mm
- For deep floor voids the SPIDER hub can be mounted on a platform
- Hub manufactured from galvanised steel
- To comply with OFTEL regulations and Low Voltage Directive the power leads are supplied in an earthed flexible metal conduit providing electrical segregation between power and data
- Desking units can be supplied by Ackermann

POWER HUB

- Incoming supply connected via 2 x 25mm diameter knockouts
- Incoming supply terminal capacity 25mm²
- Alternative MCB ratings and types available on request

DATA HUB

- Up to 40 RJ45 data connectors (available from MK Electric)
- Large (120mm x 35mm) aperture provides entry for data and voice cables
- Data module can be wired off site and installed into the hub complete
- Alternative data options available on request

OUTLETS

- Up to 12 outlets can be connected to the hub
- 50mm diameter umbilical tubing supplied on 25m long reels and cut to length on site to suit any configuration
- Cut out size for floor outlets 127mm
- Umbilicals manufactured from fire retardant grade of Polyamide