



Quick Fit Floor Service Outlet Boxes & Grommets

Quick fit 2, 3 and 4 compartment floor service outlet boxes

Electrak has produced the Quick Fit Floor Service Outlet Box to meet the demands of the modern working environment. Supplied fully assembled and configured to customer specification.

The 2, small 3 or large 3 and 4 compartment floor box provides fast installation with simple tool-free fixing mechanisms.



2 compartment (112mm width plates)



Large 3 compartment (100mm width plates)



Small 3 compartment (75mm width plates)



4 compartment (75mm width plates)

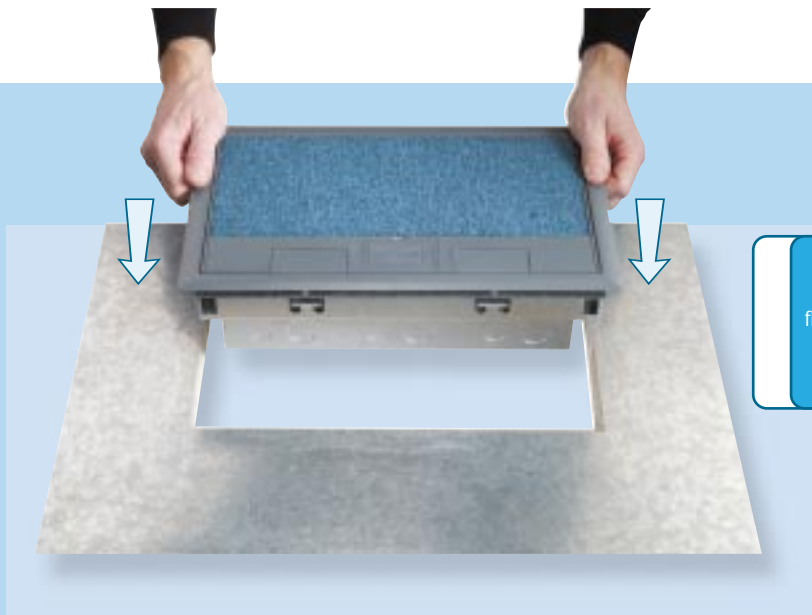
Features...

- Quick fit design
- Tool-free fixing
- Easy removal of lid and trim assembly for carpet fitting
- Reversible self closing lid
- High quality construction withstands 4KN-point load test
- Lid retention latches
- Carpet retention spikes
- Cable outlet retention latches
- 2, 3 or 4 compartment boxes
- 75, 85 or 110mm depth as standard
- 2 x 1 gang (60.3mm fixing centres) and 2 gang (120.6mm fixing centres) accessories plates.

Benefits...

- **Fast Installation**
The box (with or without tap-off unit) only needs to be pushed down into the floor aperture to secure it.
- **Easy Access For Carpet Fitting**
After the installation of the box, there are 2 actions which are required to be undertaken before the carpet can be fitted - the release of the lid and trim assembly locking handles and the removal of the assembly.
- **Easy Installation of Services**
The lid and trim assembly quick release mechanism permits fast access to all compartments for the installation of services.
- Can be pre-fitted with socket outlet and tap-off unit.

Quick fit in less than 10 seconds...



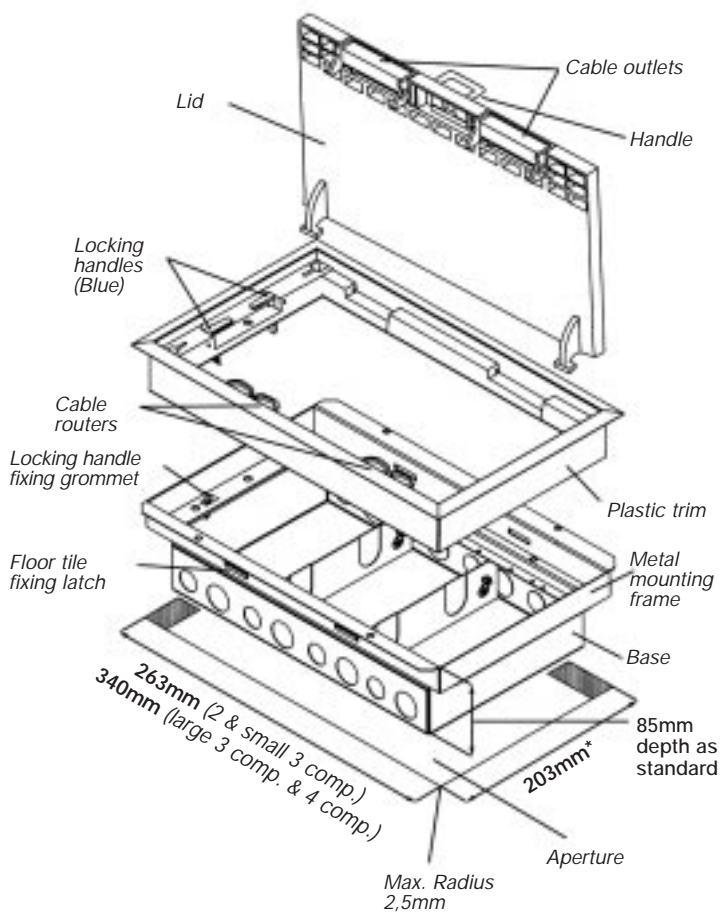
To install box:
Cut the hole in the raised
floor tile, lower the complete
box into the aperture and
push firmly down.

To fit carpet:
Detach the lid and trim assembly
by lifting the blue locking handles
and lifting out. Cut and fit the
carpet. Push the lid and trim
assembly back into place.



Box in place in less
than ten seconds.





*The aperture dimension 203mm has a fixing tolerance between 203 to 205mm

Floor cut-out aperture the same for single base or separate compartment base

Materials...

- Lid and trim mouldings are precision engineered from hard wearing durable 'Nylon 6'. The lid is reinforced with a Zintec coated mild steel plate.
- Mounting frame and box base - 0.9mm thick galvanised steel.

Dimensions...

- 2 and small 3 compartment boxes overall dimensions: 290mm x 230mm x 85mm depth (75mm and 110mm depth available as standard).
- Large 3 and 4 compartment box overall dimensions 366mm x 230mm x 85mm depth (75mm and 110mm depth available as standard).
- Lid can accommodate carpets up to 6mm depth.
- Depth from underside of lid to accessory plates is 35mm for 85mm deep floor box (60mm for 110mm deep floor box).
- Depth from underside of accessory plates to base is 45mm for 85mm deep floor box (35mm for 75mm deep floor box, and 45mm for 110mm deep floor box).

Wiring...

- Each compartment has 2 entries for 20mm and 2 entries for 25mm flexible conduits.

Colour...

- Standard colour of mouldings RAL 7012. Alternative colours available as special order.
- Plates goosewing grey.

Buyer's guide

Firstly order the Floor Box to suit the depth of raised floor and the number of plates that you require. Secondly choose the accessory plates to match your power, data and voice requirements.

Description

Floor service box single base - 75mm depth

Floor service box single base - 85mm depth

Floor service box single base - 110mm depth

Floor service box separate compartment base - 75mm depth

Floor service box separate compartment base - 85mm depth

Floor service box separate compartment base - 110mm depth

Blank Plate

2 gang switched socket outlet with plate

2 gang switched socket outlet with plate, low noise

2 gang unswitched socket outlet with plate

3 gang unswitched socket outlet with plate

Punched plate for 2 x 1 gang accessories (60.3mm fixing centres)

Punched plate for 2 gang accessories (120.6mm fixing centres)

2 x LJ2 accessory plate (50mm centres)

4 x BNC connector plate

4 x Data / Telecom plate (37mm x 22mm cut outs)

6 x Data / Telecom plate (37mm x 22mm cut outs)

Floor Service Box - 3 Comp 85mm Depth complete with 2 gang switched socket outlet

Floor Service Box - 3 Comp 85mm Depth complete with 2 gang switched socket outlet and two 2x1 gang accessory plates (60.3mm centres)

Quick Fit Access Floor Grommet

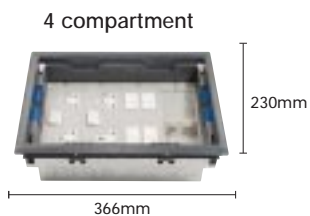
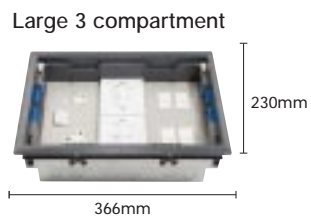
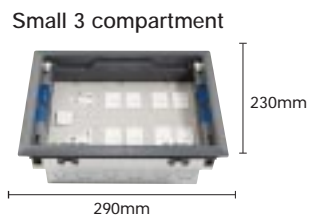
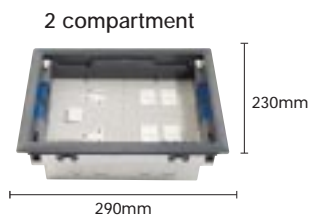
Quick Fit Cleaners Grommet (complete with single unswitched socket)

- Other accessory plates available upon request.

- Please state manufacturer of data / telecom module when ordering, as cut out sizes may vary.

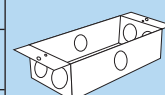
- Floor Boxes are available pre-wired with any Electrak tap-off unit.

2 and Small 3 compartment
floor box and accessory plates



Large 3 and 4 compartment floor box and accessory plates

	112mm Width Plates	75mm Width Plates	100mm Width Plates	75mm Width Plates
	CR2001	CR3001	CR011	CR4001
	CR2002	CR3002	CR012	CR4002
	CR2003	CR3003	CR013	CR4003
	CR2004	CR3004	CR014	CR4004
	CR2005	CR3005	CR015	CR4005
	CR2006	CR3006	CR016	CR4006
	CR2100	CR4100	CR020	CR4100
	CR2101	CR4101	CR022	CR4101
	CR2102	CR4102	CR023	CR4102
	CR2104	CR4104	CR029	CR4104
	CR2105	CR4105	CR030	CR4105
	CR2106	N/A	CR026	N/A
	CR2107	N/A	CR028	N/A
	N/A	CR4106	CR031	CR4106
	CR2109	CR4108	CR033	CR4108
	CR2113	CR4112	CR024	CR4112
	CR2114	CR4113	CR025	CR4113



		CR3010		
			CR010	



		EG0010
		EG0020



For more information on Electrak tap-offs and other floor box configurations contact the Sales department at Electrak tel: +44 (0) 1207 503400
Email: sales@electrak.co.uk or visit our website www.electrak.co.uk

Quick fit floor grommets



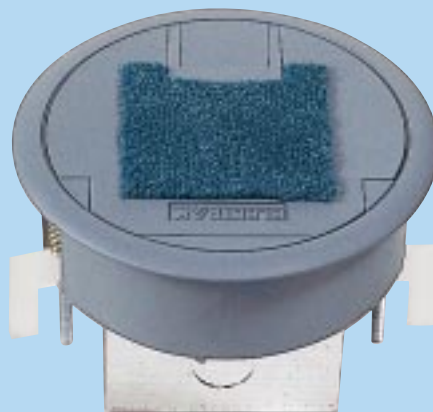
Standard Quick Fit Grommet - EG0010

Features...

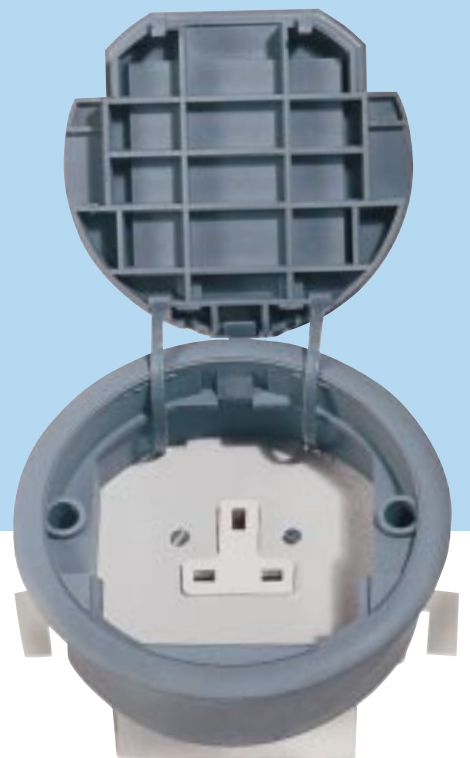
- Quick fit installation from floor tile fixing to cable deployment
- The grommet can be simply secured by pushing down the spring-loaded screws and rotating it a quarter turn
- Manufactured from hard wearing durable Nylon 6 in Grey RAL 7012 as standard (alternative colours available as special order)
- Allows simple access for services under floor to workstations of all kinds
- The ELECTRAK QUICK FIT GROMMET'S unique design can accommodate all cable types or three metal conduits up to a 20mm diameter or 25mm without foam



Standard Quick Fit Grommet - EG0010



Cleaner's Grommet - EG0020
Follow installation instructions
A and B opposite

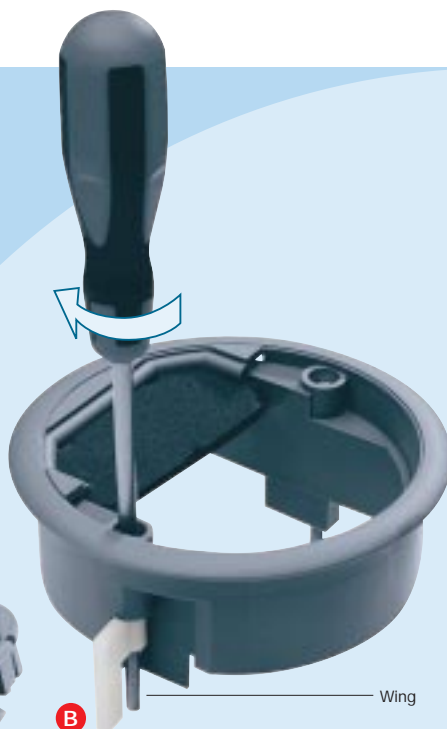


Cleaner's Grommet - EG0020
Complete with single socket outlet.
Remove the lid as in A. To fit lid - slide into
lug holes, push down to fix and close handle.

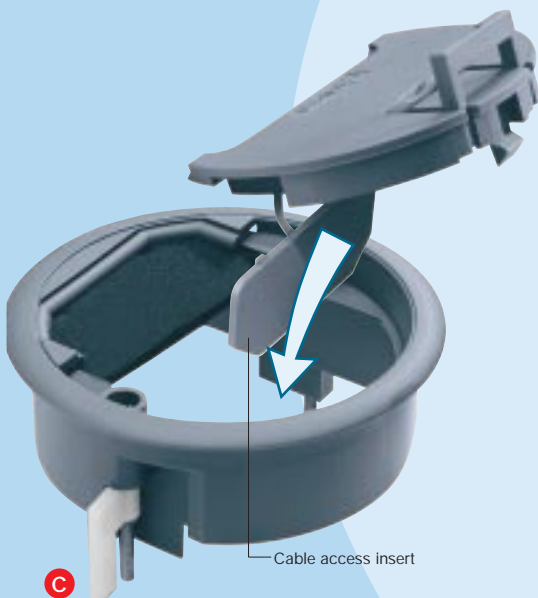
Installation...



A Lift the handle and pull to remove the lid.



B Push the grommet into the raised floor tile aperture and push down.
Push down the spring loaded screws and rotate a quarter turn to fix. Ensure the wings are located under the floor panel.
For honeycombed floor panels one wing should face downwards and one wing should face upwards.



C Drop cable access insert into the housing opening.



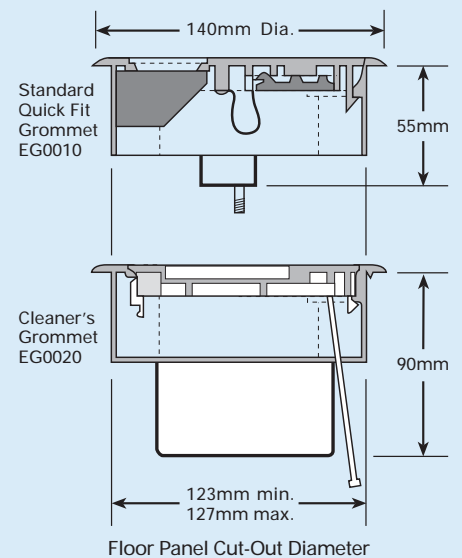
D Slide lid into the lug holes.



E Push down the lid to close. If the grommet is not in use replace the cable access insert.

Dimensions...

Standard Quick Fit Grommet - EG0010
Cleaner's Grommet - EG0020



The Electrak range

the route to total cable management

Electrak manufactures a comprehensive range of high quality systems for the safe and reliable distribution of power, voice and data services throughout all types of building from the floor to ceiling. Precision engineered to give a durable and attractive finish, Electrak products include:

- Underfloor Power Track
- Access Floor Service Outlet Boxes
- Access Floor Grommet Outlets
- Modular Desk and Screen Power, Data and Telecom Outlet Units
- Busbar Trunking Lighting and Power Distribution Systems
- Busbar Trunking with Integral Communication Bus Circuit
- Lightrak EIB Electronic Lighting Control System
- Electrical Accessories

A design and quotation service is available to help you achieve the optimum use of the Electrak range of products.



Quick Fit Consett Range Floor Service Outlet Boxes and underfloor Power Track



Rotasoc, a range of modular desk and screen power, telecom and data units (360° rotating sockets)



Lightrak EIB Lighting Control System with Busbar Trunking Lighting and Power Distribution System



Lighting and Power Distribution Systems with Integral Communication Bus



Services pass through access floor grommet outlet to workstation power, telecom and data



ELECTRAK
www.electrak.co.uk

Electrak International Limited No.1 Industrial Estate Medomsley Road Consett Co. Durham DH8 6SR
Tel: +44 (0) 1207 503400 Fax: +44 (0) 1207 501799 Email: sales@electrak.co.uk

Because of their policy of continuous improvement, Electrak reserves the right to change product specification without notice.